

## Precision Engineered Steel Mill Hydraulic Cylinder Stabilized Production Machinery

### Our Product Introduction

for more products please visit us on [macrodynecylinder.com](http://macrodynecylinder.com)

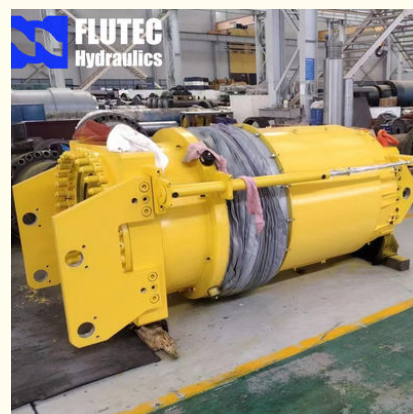
#### Basic Information

- Place of Origin: Jiangsu, China
- Brand Name: Flutec
- Certification: ISO9001,Dnv, SGS, BV, ABS, GI
- Model Number: 250\*180\*80
- Minimum Order Quantity: 1 Piece
- Price: \$ 500- \$ 100000
- Packaging Details: Standard Seaworthy Wooden Case
- Delivery Time: 30Days
- Payment Terms: L/C T/T D/P



#### Product Specification

- Name: Large Bore Hydraulic Cylinder
- Model NO.: 800x2105
- Structure: Piston Type
- Material: Alloy Steel
- Bore Diameter: Up To 2500mm
- Rod Diameter: Up To 2000mm
- Stroke Length: Up To 20,000mm
- Design Pressure: Up To 40MPa
- HS Code: 8412210090
- Certification: GS, RoHS, ISO9001, Dnv, SGS, BV, ABS, GI
- Pressure: High Pressure
- Work Temperature: Normal Temperature
- Acting Way: Double Acting
- Working Method: Straight Trip



#### More Images



## Product Description

### Handheld Small Hydraulic Cylinder

#### Product Description

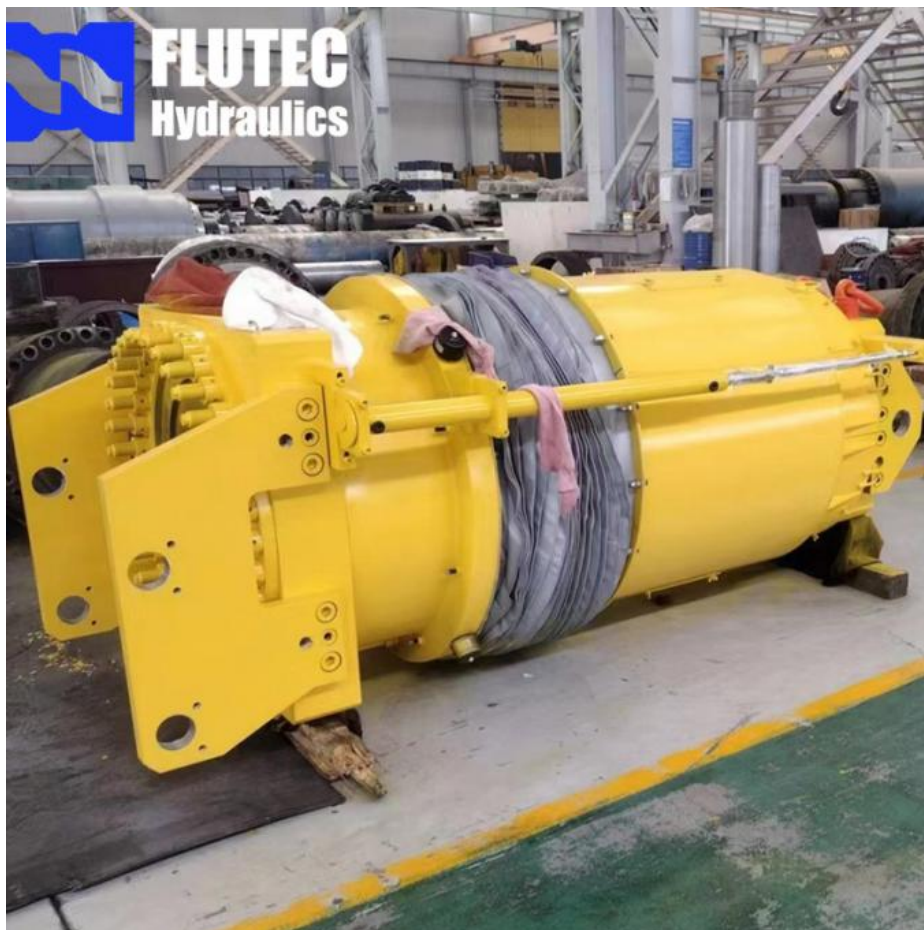
Welcome To FLUTEC HYDRAULICS!

Product Description



Our Product Introduction

for more products please visit us on [macrodynecylinder.com](http://macrodynecylinder.com)



#### Product Parameters

#### Technical Data

<b>Cylinder Type</b>	Mill type, Head Bolted, Base Welded
<b>Bore Diameter</b>	Up to 2500mm
<b>Rod Diameter</b>	Up to 2000mm
<b>Stroke Length</b>	Up to 20,000mm
<b>Piston Rod Material</b>	AISI 1045, AISI 4140, AISI 4340, 20MnV6, Stainless steel 2Cr13 or 1Cr17Ni2
<b>Rod Surface Treatment</b>	Hard chrome plated, Chrome/Nickel plated, Ceramic coated
<b>Tube Material</b>	Carbon steel AISI1045 or ST52.3, Alloy steel AISI4140 or 27SiMn
<b>Tube Surface Painting</b>	Colors according to RAL and thickness according to customer needs
<b>Mounting Type</b>	Clevis, Cross tube, Flange, Trunnion, Tang, Thread
<b>Design Pressure</b>	Up to 40Mpa
<b>Seal Kits Type</b>	PARKER, MERKEL, HALLITE, , TRELLEBORG
<b>Quality Assurance</b>	1 year
<b>Certificate</b>	SGS, BV, ABS ,GL, DNV etc.
<b>Application</b>	Mobile Equipment,Cement Mill, steel mill, Hydraulic press, etc.

#### Quality Assurance

Our quality management system is certified to ISO 9001  
Quality control standards include material records, process control plans,

#### Quality Process



	Manufacturing approvals and inspection data
Testing Standards	All products undergo 100% pressure testing 1.5 times the maximum allowable working pressure or to customer specifications
	Static and dynamic pressure testing.
	Ultraviolet leak detection technology.
	Non-destructive testing.
	Real-time monitoring and test phase documentation
Fluid Cleanliness	Independent sampling and oil diagnostic control
Finished Product Display	

# FINISHED PROJECT LIST

## FLUTEC HYDRAULICS (CHANGZHOU) CO., LTD.



Application Area

## APPLICATION INDUSTRIES



STACKER



SHIP-CRANE



NEW-ENERGY-EQUIPMENT



RIG-PLATFORM



REACH-RECLAIMER



INSTALLATION-PLATFORM



PORT-EQUIPMENT



ARMY FACILITY



SPLIT-HOPPER-BARGE



MINING-INDUSTRY



INDUSTRIAL-FURNACE



HEAVY-MACHINE

Company

Profile

FLUTEC HYDRAULICS is an expert at designing and manufacturing a broad range of custom engineered hydraulic cylinders and cylinder systems as well as custom engineered press bolster plates. We are proud to offer superior quality products and services for various applications including industrial, construction, mobile, agricultural, mining, steel mill, hydraulic press, etc. Our highly skilled team and modern technical facilities allow us to manufacture large bore hydraulic cylinders and long stroke hydraulic cylinders with 100% confidence and assurance.

We understand our customers need dependable quality and excellent services with affordable cost to stay ahead in today's highly competitive market. FLUTEC HYDRAULICS can meet those requirements with our robust, efficient and long life products together with prompt services.

To be mentioned, our sales team is strictly trained both in technology and language. They are full of experiences in fluid power and machinery. We are glad to personally visit our customers to work better.

## COMPANY SHOW





## PRODUCTION FACILITIES



1. RAW MATERIAL WAREHOUSE



2. CUTTING



3. HEAVY CNC MACHINE



4. FLOOR DRILLING



5. FLOOR BORING MACHINE



6. HEAVY VERTICAL LATHE



7. HEAVY DRILLING



8. LARGE DEEP HOLE BORING



9. SUBMERGED ARC WELDING



10. HEAT TREATMENT AFTER WELDING



11. LARGE LATHE



12. LARGE LATHE



13. LARGE GRINDING



14. DEEP HOLE HONING



15. OUTSIDE HONING



16. POLISHING



17. HEAVY LATHE



18. 100TON BRIDGE CRANE



19. INSPECTION ONSITE



20. ASSEMBLY BENCH



21. PRESSURE TEST BENCH



22. PAINTING BOOTH



23. SEAWORTHY PACKING



24. DELIVERY

### FAQ

**Q1: What does your company do?**

A: we are a supplier of high-quality hydraulic products including Hydraulic Cylinder, Honed Tube, Chromed Rod, Machined Platen, Cylinder Parts, and other components.

**Q2: Are you a manufacturer or trading company?**

A: We are a manufacturer.

**Q3: Are you able to make Non-standard or customized products?**

A: Yes, we can. Custom-made Hydraulic Cylinder is our key business.

**Q4: How long is your delivery time?**

A: The delivery time for customized products is 30 working days. But it also depends on the product requirements and quantity.

**Q5: Do you provide samples?**

A: No, we don't provide samples.

**Q6: What are your payment terms?**

A: T/T/ or L/C or D/P. If you have any questions, please feel free to contact us.

**Q7: What are your After-sales services?**

A: Before shipment, Each individual product will be strictly inspected on our factory QC Process System. In addition, We have a Customer Service team to respond to customers' questions within 12 hours. Being helpful in solving customers' problems is always our goal.

**MACRODYNE® FLUTEC HYDRAULICS (CHANGZHOU) CO., LTD.**



+8613328169686



rex.tang@flutechhydraulics.com



macrodynecylinder.com

No. 4-2717, Powerlong Plaza, Zhonglou District, Changzhou, Jiangsu, China